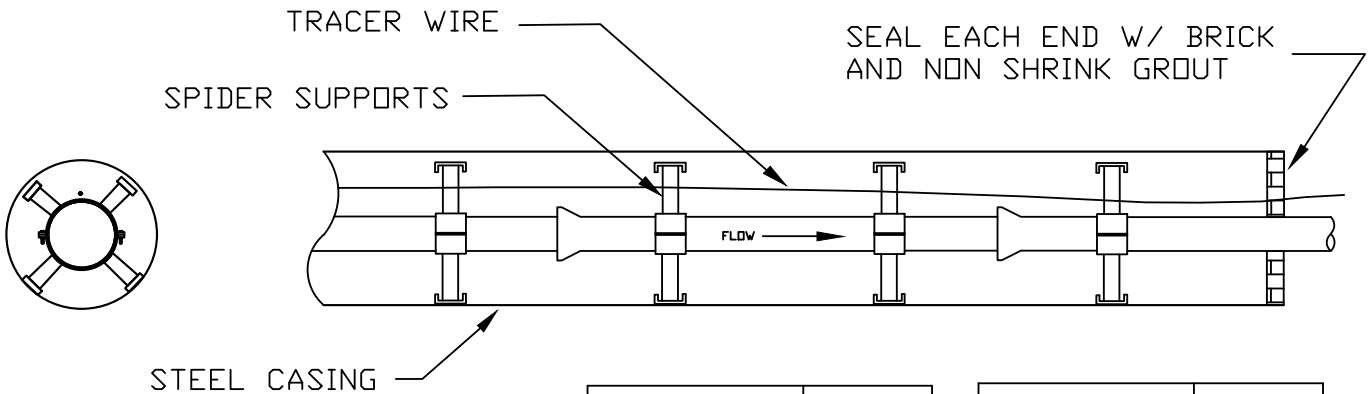
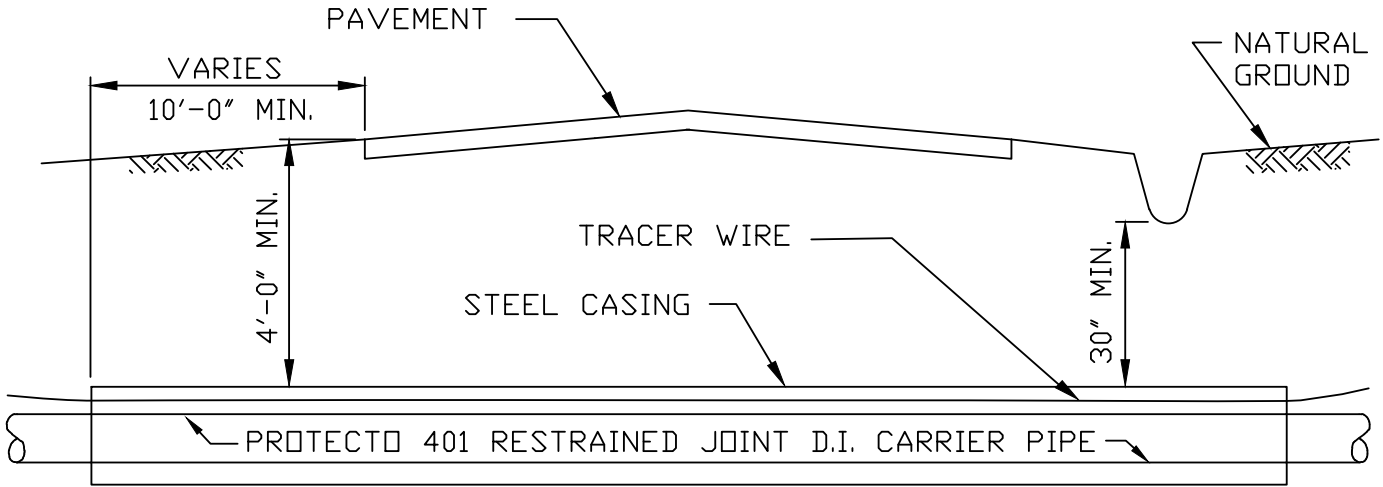


SEWER MAIN JACK AND BORE



SEWER FORCE MAIN DIAMETER (IN.)		WALL THICKNESS (IN.)
PIPE	CASING	
4-8	18	0.150
10-12	24	0.188
16-18	36	0.250
20-24	42	0.312
30-36	48	0.432

GRAVITY SEWER DIAMETER (IN.)		WALL THICKNESS (IN.)
PIPE	CASING	
4-12	24	0.188
16-24	36	0.250
30	42	0.312
36	48	0.375
42	54	0.432
48	60	0.432

NOTES:

1. CASING SHALL BE UNCOATED SPIRAL WELDED STEEL MEETING ASTM A-139, GRADE B WITH A YIELD STRENGTH OF 35,000 PSI.
2. CROSSINGS ON SCDOT MAINTAINED ROADS TO BE IN ACCORDANCE WITH CURRENT SCDOT STANDARDS AND APPROVED ENCROACHMENT AGREEMENT.
3. CARRIER PIPE SHALL BE RESTRAINED JOINT PROTECTO 401 LINED DUCTILE IRON PIPE.
4. SPIDER SUPPORT SPACING SHALL BE TO MANUFACTURERS SPECIFICATIONS, MINIMUM (2) PER JOINT.
5. GREEN #12 AWG SOLID COPPER TRACING WIRE SHALL BE INSTALLED WITH CARRIER PIPE THROUGH CASING, ALL TRACER WIRE CONNECTIONS TO BE MADE WITH DIRECT BURY WIRE NUTS DBR/Y-600 OR EQUAL.