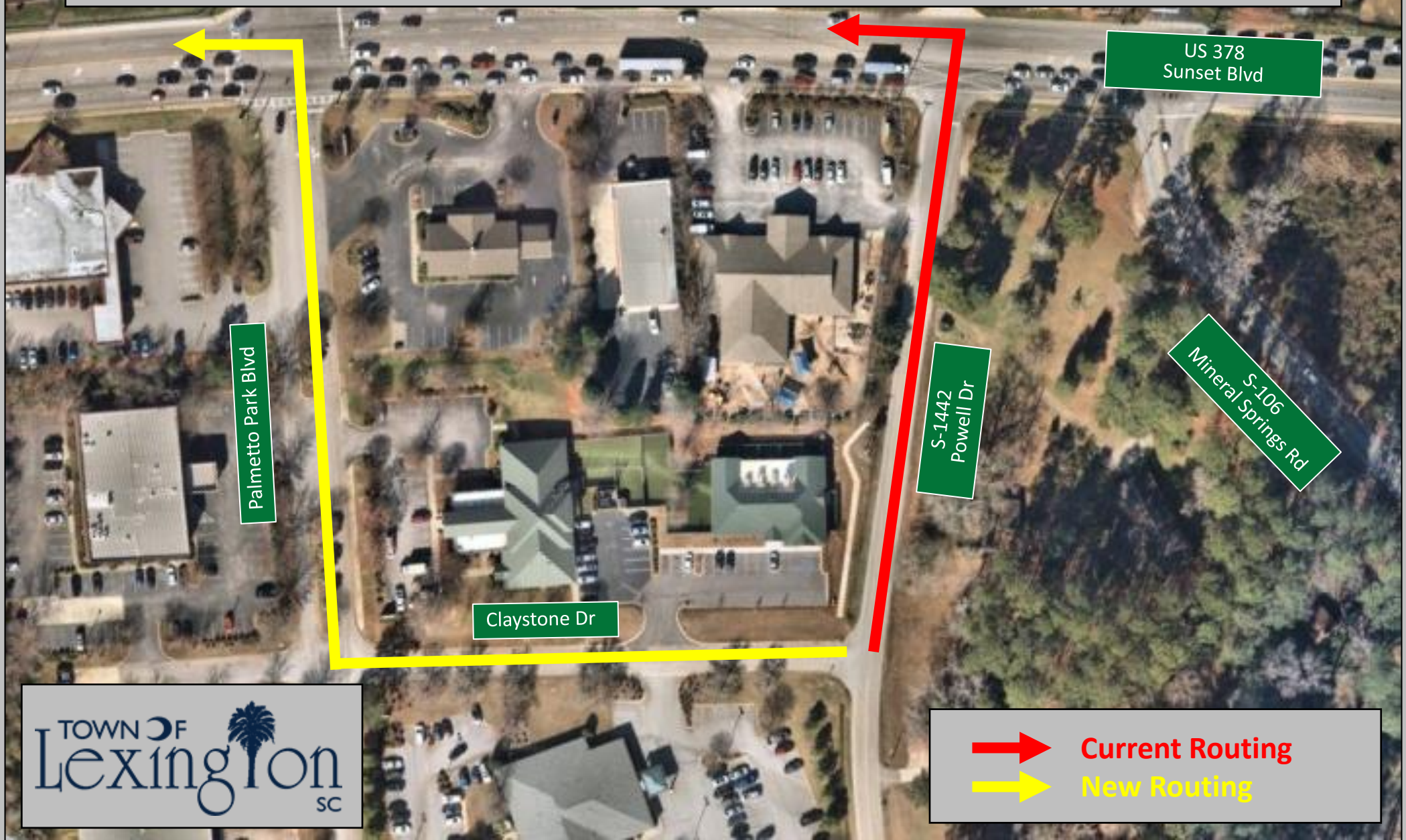


US 378 at Mineral Springs Road – Right Turn Lane Concept

Traffic Routing Adjustments – From Powell Drive to US 378



US 378
Sunset Blvd

Palmetto Park Blvd

Claystone Dr

S-1442
Powell Dr

S-106
Mineral Springs Rd



 **Current Routing**
 **New Routing**